



UVH 432Y-M20

- Metal enclosure
- 2 Contacts
- 62 mm x 80 mm x 50 mm (basic component)
- Switching points and contact function adjustable
- 3 cable entries M 20 x 1.5
- Actuator head can be repositioned in steps 4 x 90°
- Continuous adjustment of lever position 360°
- Lever can be transposed by 180°

Data

Ordering data

Product type description	UVH 432Y-M20
Article number (order number)	101161093
EAN (European Article Number)	4030661192178
eCl@ss number, version 12.0	27-27-06-01
eCl@ss number, version 11.0	27-27-06-01
eCl@ss number, version 9.0	27-27-06-01
ETIM number, version 7.0	EC000030
ETIM number, version 6.0	EC000030

Approvals - Standards

Certificates	cULus
--------------	-------

General data

Standards	EN IEC 60947-5-1
Working principle	mechanical

Slide form	Castor
Housing material	Light alloy die-casting
Housing coating material	painted
Gross weight	420 g

General data - Features

Number of normally closed (NC)	2
--------------------------------	---

Safety classification - Safety outputs

B _{10D} Normally-closed contact (NC)	2,000,000 Operations
---	----------------------

Mechanical data

Actuating element	Roller lever
Roller material	Plastic
Mechanical life, minimum	10,000,000 Operations
Actuating angle, from left of switch axis	30 °
Actuating angle, from right of switch axis	30 °
Contact opening	2 x 1.5 mm
Actuating speed, minimum	1 mm/min
Actuating speed, maximum	3 m/s
Note (Actuating speed)	Actuating speed with vertical actuating angle to switch axis

Mechanical data - Connection technique

Termination	Screw terminals M20 x 1.5
Cable section, minimum	1.5 mm ²
Cable section, maximum	2.5 mm ²
Note	All indications including the conductor ferrules.
Wire cross-section	13 AWG

Mechanical data - Dimensions

Length of sensor	50 mm
Width of sensor	62 mm
Height of sensor	138 mm
Width of Castor	8.5 mm
Diameter of Castor	20 mm

Ambient conditions

Degree of protection	IP65
Ambient temperature	-20 ... +60 °C

Ambient conditions - Insulation values

Rated insulation voltage U_i	500 V
--------------------------------	-------

Electrical data

Thermal test current	16 A
Switching element	Opener (NC)
Switching principle	Slow action
Material of the contacts, electrical	Silver

Note

Note (General)	Type of contact and switching points can be factory set to order.
----------------	---

Ordering code

Product type description:
U(1) 432Y-(2)-(3)

(1)

S	Plunger S
K	Offset roller lever K

8H	Roller lever 8H
H	Roller lever H
3H	Roller lever 3H
7H	Roller lever 7H
4H	Spring rod lever on shaft 4H
9H	Rod lever 9H
10H	Rod lever 10H
2H	Leaf spring lever 2H
6H	Leaf spring lever 6H

(2)

without	2 NC contact
2S	2 NO contacts
1S/10E	1 NO contacts/1 NC contact

(3)

1272	Version for low temperatures to -30 °C
-------------	--

Pictures

Product picture (catalogue individual photo)



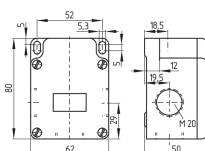
ID: ku43hf01

| 451.3 kB | .jpg | 161.572 x 272.344 mm - 458 x 772 px - 72 dpi

| 111.8 kB | .png | 73.731 x 124.531 mm - 209 x 353 px - 72 dpi

| 79.6 kB | .jpg | 73.378 x 123.472 mm - 208 x 350 px - 72 dpi

Dimensional drawing basic component



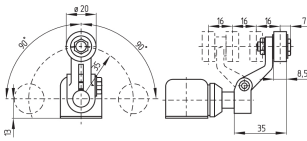
ID: 1u43-g02

| 27.7 kB | .cdr |

| 3.7 kB | .png | 74.083 x 51.858 mm - 210 x 147 px - 72 dpi

| 82.9 kB | .jpg | 352.778 x 247.297 mm - 1000 x 701 px - 72 dpi

Dimensional drawing actuator

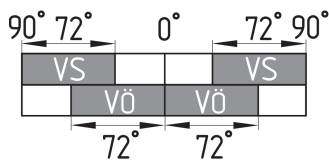


ID: 1t15vb01

| 10.3 kB | .png | 74.083 x 51.858 mm - 210 x 147 px - 72 dpi

| 114.5 kB | .jpg | 352.778 x 247.297 mm - 1000 x 701 px - 72 dpi

Switch travel diagram



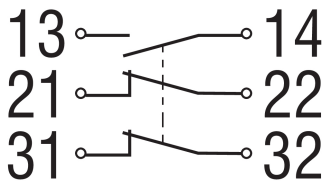
ID: ku43-s03

| 56.2 kB | .ai | 297 x 210.002 mm - 841 x 595 px - 72 dpi

| 1.2 kB | .png | 74.083 x 52.564 mm - 210 x 149 px - 72 dpi

| 93.9 kB | .jpg | 352.778 x 182.386 mm - 1000 x 517 px - 72 dpi

Diagram

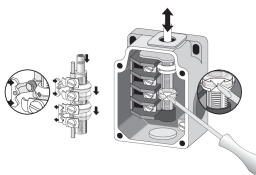


ID: k2o1sk02

| 82.3 kB | .jpg | 352.778 x 193.322 mm - 1000 x 548 px - 72 dpi

| 3.2 kB | .png | 74.083 x 40.569 mm - 210 x 115 px - 72 dpi

Operating principle



ID: ku432a01

| 203.1 kB | .cdr |

| 157.4 kB | .jpg | 352.778 x 236.361 mm - 1000 x 670 px - 72 dpi

| 19.8 kB | .png | 74.083 x 49.742 mm - 210 x 141 px - 72 dpi

Operating principle



ID: 235hz05

| 15.2 kB | .cdr |

| 180.5 kB | .jpg | 352.778 x 749.3 mm - 1000 x 2124 px - 72 dpi

| 3.4 kB | .png | 74.083 x 157.339 mm - 210 x 446 px - 72 dpi



K.A. Schmersal GmbH & Co. KG, Möddinghofe 30, 42279 Wuppertal

The details and data referred to have been carefully checked. Images may diverge from original. Further technical data can be found in the manual. Technical amendments and errors possible.

Generated on: 25/06/2024, 13:34